

ORGANIZATIONAL CHARTS ACADEMIC AFFAIRS

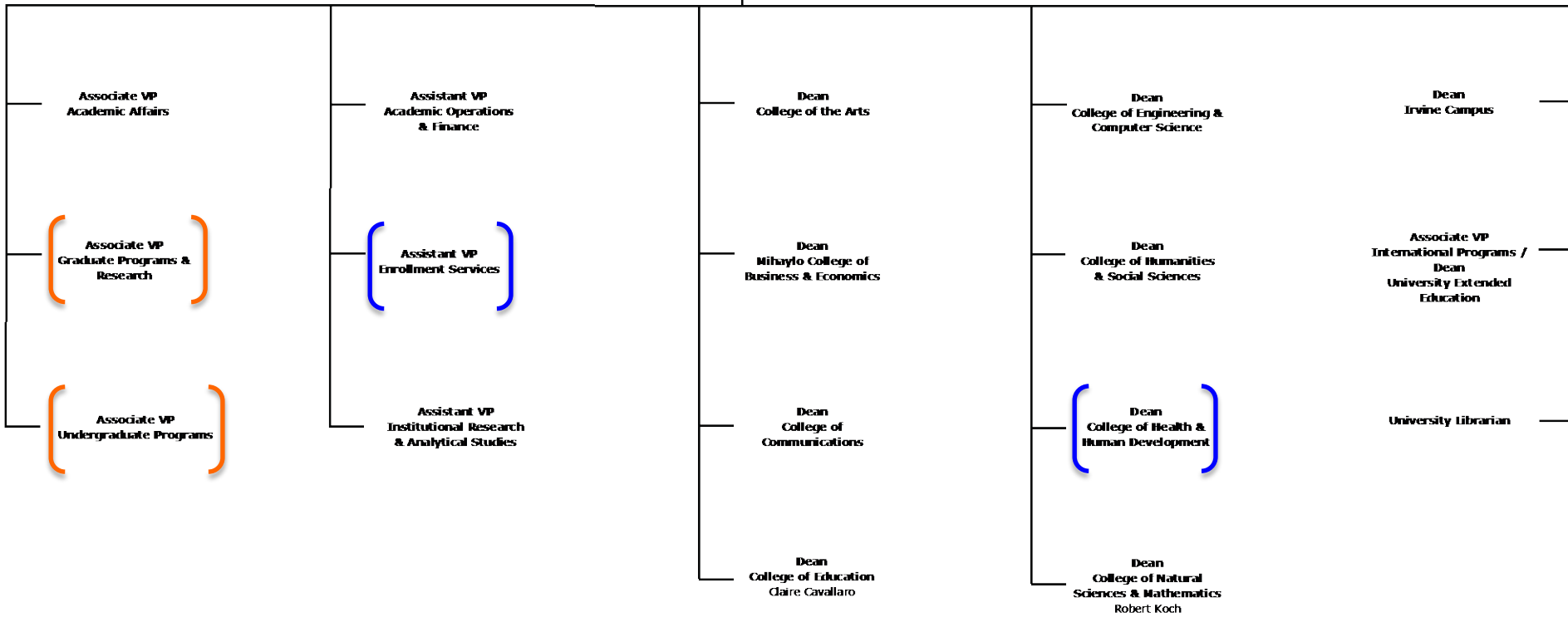
PRBC | October 4, 2013

Division of Academic Affairs – December 2012

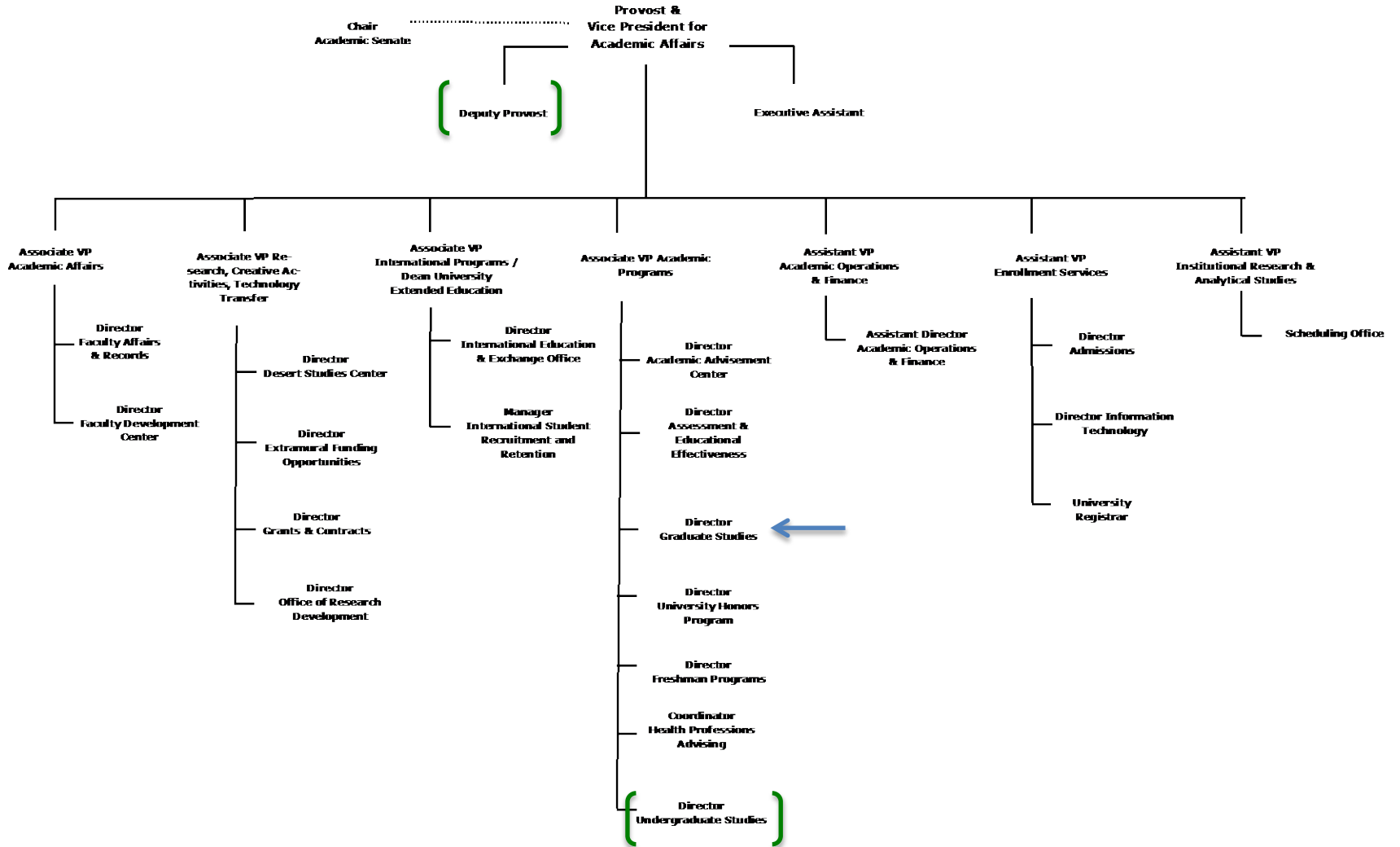


Associate/Assistant Vice Presidents

Deans/University Librarian



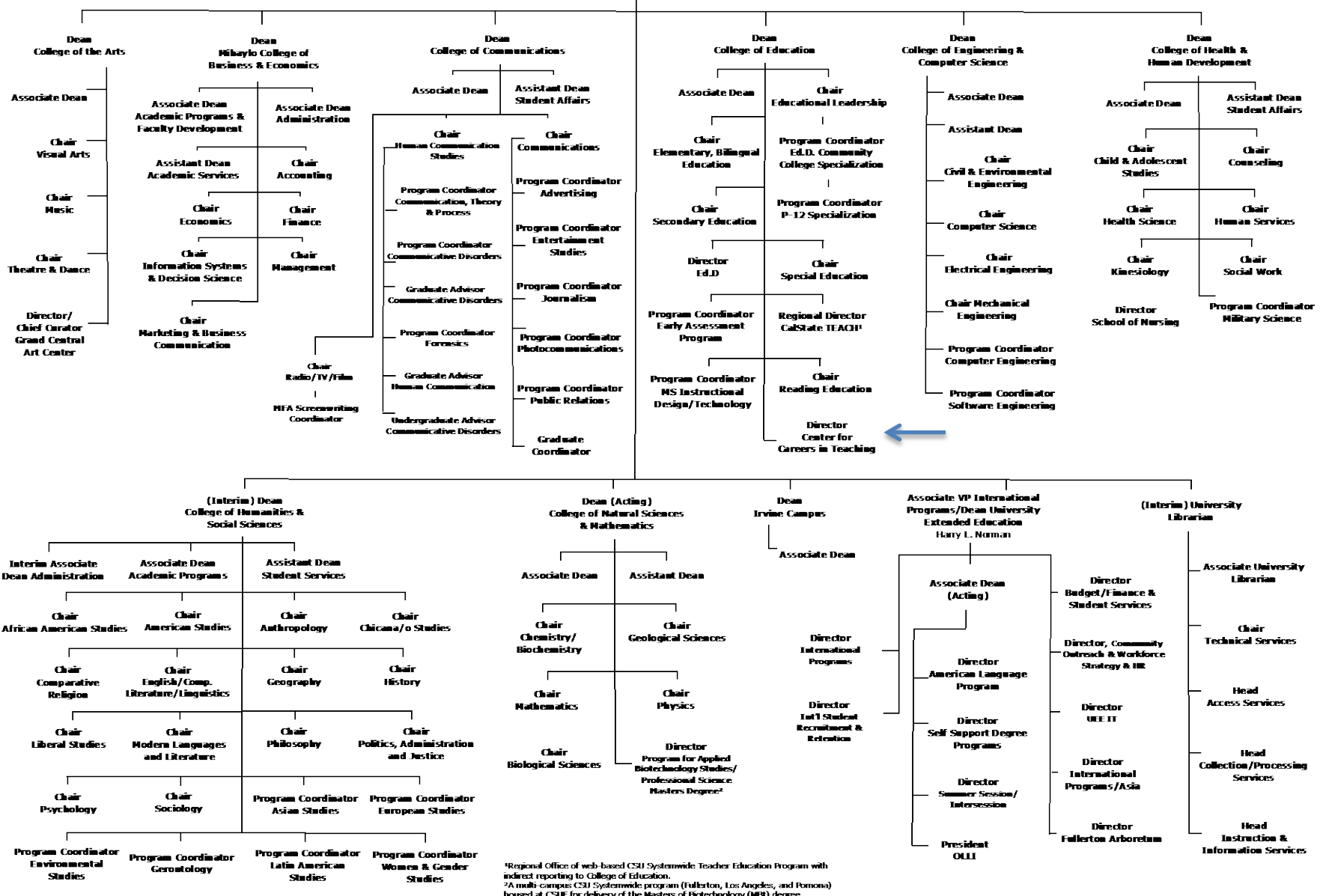
() Change in name and portfolio () Change in portfolio () Reassigned



() New Position



Provost &
Vice President for
Academic Affairs



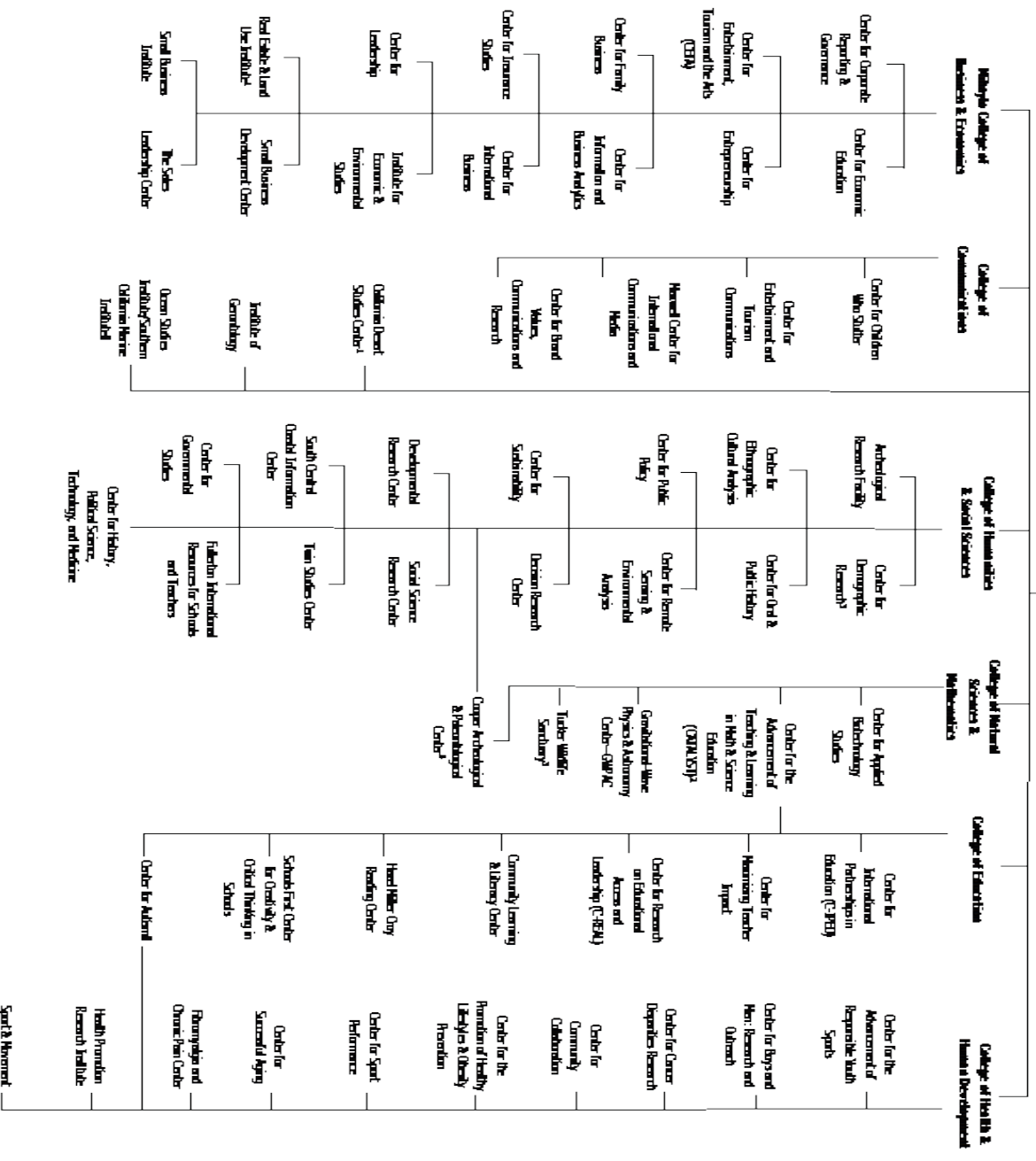
*Regional Office of web-based CSU Systemwide Teacher Education Program with indirect reporting to College of Education.
*A multi-campus CSU Systemwide program (Fullerton, Los Angeles, and Pomona) housed at CSUF for delivery of the Masters of Biotechnology (MBT) degree.



CALIFORNIA STATE UNIVERSITY
FULLERTON™

Pravert E.
Vice President for
Academic Affairs

Division of Academic Affairs
Research Centers & Institutes
Chart IV
September 2013



¹ In cooperation with the California State University
² In cooperation with the California State University
³ In cooperation with other California State University campuses, the University of Southern California, and National College
⁴ In cooperation with the University of California, San Diego, the University of Southern California, and National College
⁵ In cooperation with the University of California, San Diego, the University of Southern California, and National College
⁶ In cooperation with the University of California, San Diego, the University of Southern California, and National College